

Smart Sensor Detection by HALO



Detect vape, smoke, and THC for smart, discreet security.

The power behind **your mission**



Detect | Protect | Respond

Smart Sensor detection is a multi-sensor that detects vape, smoke, THC, and sound abnormalities.

Additional sensors monitor air quality, temperature, humidity, and chemical levels as well providing other detection functions.

HALO detects environmental changes that occur in privacy concern areas and sends alerts to security personnel over the connected network.

HALO can detect vape and vape with THC, notifying designated personnel when substances are detected. It includes a built-in tamper detection feature that emits a sound alarm or silently alerts security personnel. These detectors can also measure your Air Quality Index (AQI).

Security can now monitor a range of areas they previously could not cover. Staff can receive alerts through the web or traditional alarm, access control or building management tools.



Air quality

- Particulates
- VOC's
- CO
- NO



Alerting

- Email or SMS text alerts
- Alerts to video management and access



Control

- Third-party emergency applications
- Low-voltage relay outputs
- Cloud mapping alerts



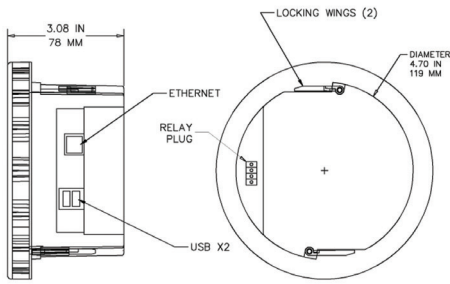
Chemical

- Ammonia
- Carbon Oxides
- Carbon Dioxide
- Nitrogen



Environmental

- Temperature
- Humidity
- Pressure
- Occupancy light sensitivity



Multiple sensors

12 unique detection sensors that work in conjunction to detect a multitude of substances with unlimited customization. It is the only vape detector that picks up THC oil.

Designed for airflow

Built with airflow in mind. The unit's design allows the sensors to pick up harmful chemicals faster.

Fewer false alarms

With multiple sensors and advanced analytics, settings are adjusted and maximized for the room environment, drastically reducing false alarms that singular sensors can trigger from body and disinfectant sprays.

No cloud fees

HALO is a security product, not a web app, so there are no annual fees.

Integrated device

Connects directly to your security monitor and video management system – no need for separate applications.

General Specifications **Image display of sensor readings only.*

| | |
|-----------------------|--|
| Operating Temperature | 32°F - 122°F (0°C- 50°C) |
| Operating Humidity | 0 to 90% Relative Humidity (non-condensing) |
| Power Supply | PoE (IEEE 802.3af Class 3 Compliance) 9W |
| Dimensions | 5.75" x 3.08" (146mm x78mm) |
| Weight | 0.8 lbs (0.365 kgs) |
| Mounting Options | Ceiling Flush Mount, Surface Mount (optional) |
| Vandal | IK10 rated, vandal-proof housing with tamper alert |
| Certifications | UL, CUL, CE, RoHS, FCC, WEEE California IoT Security 1798.91.04 |

Interface Specifications

| | |
|--------------------------------|---|
| Live Display Resolution* | 1024 x 768 |
| Frame Rate* | 1 FPS |
| Video Compression* | MJPEG |
| Audio | MEMS Microphones (2) (Audio Analysis Only) No Recording of Live Stream |
| Relays Outputs | 2, Normally Open or Closed, 48VDC at 1 amp |
| VMS Integrations | Milestone, Genetec, Avigilon, Exacqvision, Vivotek, Pelco, Ganz Cortrol, Nx Witness, Qognify, DW Spectrum IPVMS, Mirasys, Videolnsight, EoCortex, Wisenet Wave VMS, Axxonsoft, Digifort |
| Other Third-Party Integrations | Rhombus Systems, Arcules, The Boring Lab, Presence Management, IDentifyED, Vigilance Software, Punch Alert, DIR-S, Extreme Network Defender, Aruba HPE, Connect One, Audio Enhancement, AMT, Gallagher, NuLEDs, C2P |
| Status Light | Alarm Condition, Multi-Color, Programmable |
| Speaker | Alarm Condition, Pre-Recorded Files, Programmable |

Network Specifications

| | |
|--------------------------|--|
| Ethernet | RJ-45 (10/100 Base-T) |
| Alarm Triggers | Vape, vape THC, aggression, Air Quality Index (AQI), spoken keyword, tamper, particulates, carbon dioxide equivalents, volatile organic compounds, carbon monoxide, ammonia, temperature/humidity, light level, sound levels |
| Protocols | BACnet, RTSP, TCP/IP, UDP, IPV4/V6, HTTP, HTTPS, DHCP, ARP, Bonjour, Wireless Connectivity |
| Maximum User Connections | Live MJPEG Stream, 8 Users |

About Johnson Controls

At Johnson Controls, we transform the environments where people live, work, learn and play. From optimizing building performance to improving safety and enhancing comfort, we drive the outcomes that matter most. We deliver our promise in industries such as healthcare, education, data centers and manufacturing. With a global team of 105,000 experts in more than 150 countries and over 130 years of innovation, we are the power behind our customers' mission. Our leading portfolio of building technology and solutions includes some of the most trusted names in the industry, such as Tyco®, York®, Metasys®, Ruskin®, Titus®, Frick®, Penn®, Sabroe®, Simplex®, Ansul® and Grinnell®.

For more information, visit www.johnsoncontrols.co.uk

© Johnson Controls & IPVideo Corporation 2020. All rights reserved.

The power behind **your mission**

